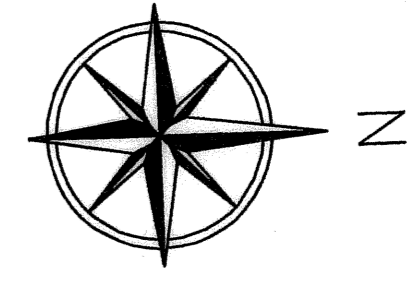


# MONTEREY BAY, A PUD

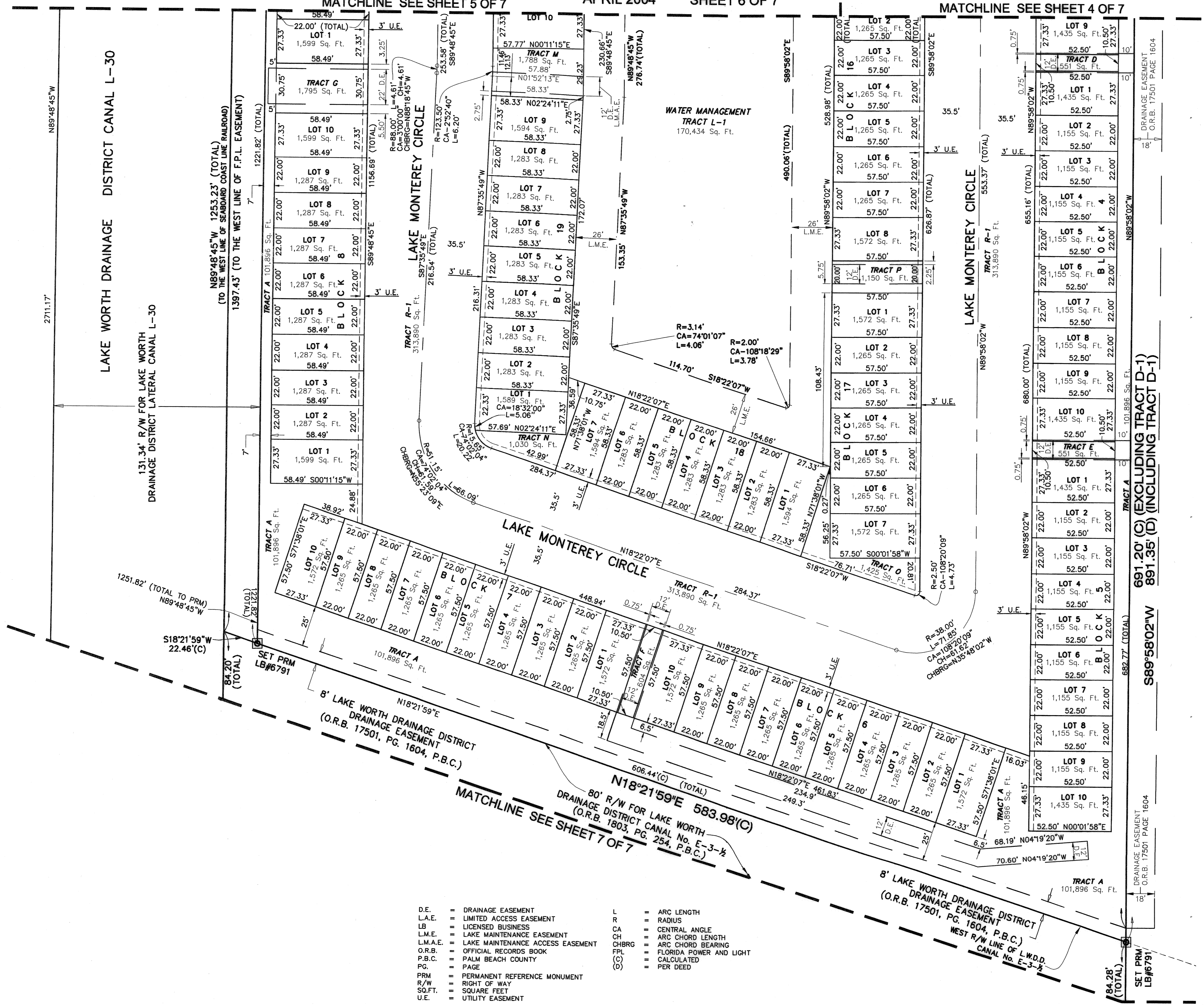
A PORTION OF THE SOUTHWEST ONE-QUARTER (SW 1/4) OF SECTION 5, TOWNSHIP 46 SOUTH, RANGE 43 EAST,  
CITY OF BOYNTON BEACH, PALM BEACH COUNTY, STATE OF FLORIDA

APRIL 2004 SHEET 6 OF 7

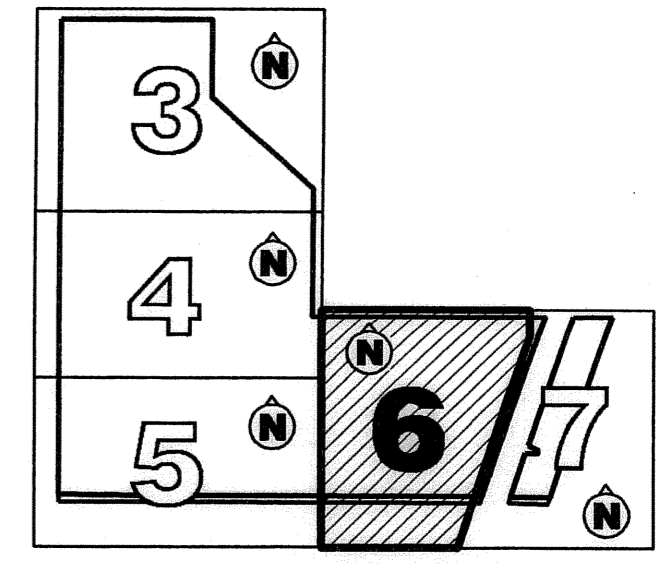
87



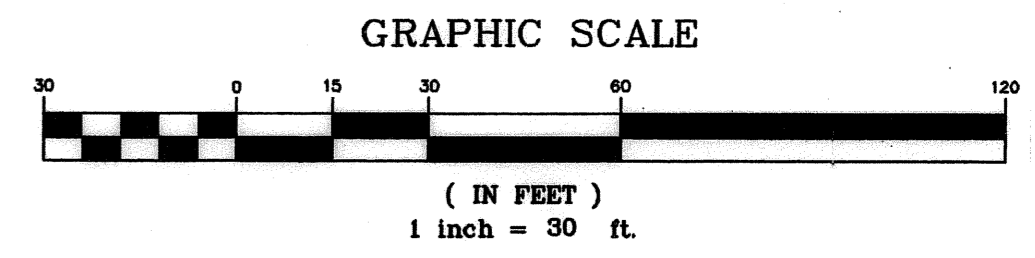
This Instrument Prepared By:  
Robert W. Jackson, Jr., P.S.M.  
**Calvin, Giordano & Associates, Inc.**  
Engineers Surveyors Planners  
1800 Eller Drive, Suite 600  
Ft. Lauderdale, Florida 33316  
Phone: 954.921.7761 Fax 954.921.8807



- D.E. = DRAINAGE EASEMENT
- L.A.E. = LIMITED ACCESS EASEMENT
- LB. = LICENSED BUSINESS
- L.M.E. = LAKE MAINTENANCE EASEMENT
- L.M.A.E. = LAKE MAINTENANCE ACCESS EASEMENT
- O.R.B. = OFFICIAL RECORDS BOOK
- P.B.C. = PALM BEACH COUNTY
- PG. = PAGE
- PRM. = PERMANENT REFERENCE MONUMENT
- R/W. = RIGHT OF WAY
- SQ.FT. = SQUARE FEET
- U.E. = UTILITY EASEMENT
- A.R.C. = ARC LENGTH
- R. = RADIUS
- C.A. = CENTRAL ANGLE
- C.H. = ARC CHORD LENGTH
- C.H.B.R.G. = ARC CHORD BEARING
- F.P.L. = FLORIDA POWER AND LIGHT
- (C) = CALCULATED
- (D) = PER DEED



SHEET KEY MAP



P:\Projects\2003\034515 Congress Boynton Beach SURVEY\PLAT\034515-1-PLAT.dwg